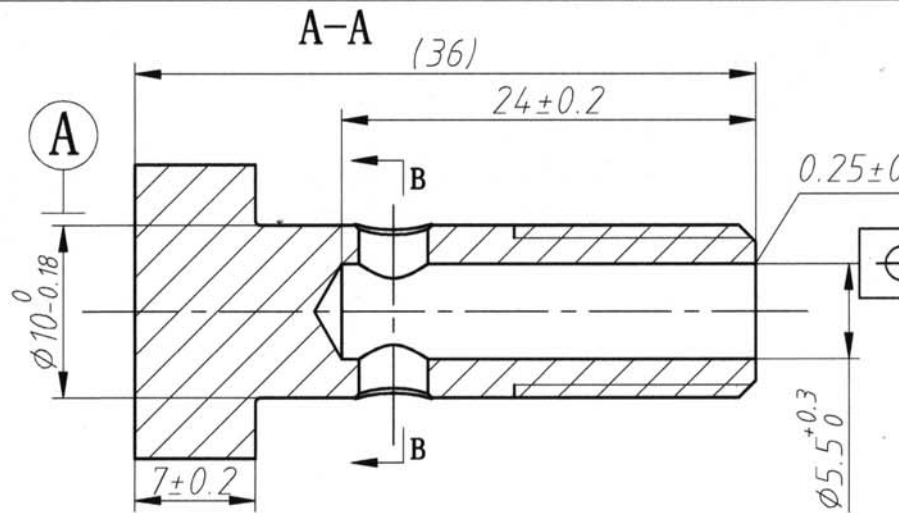
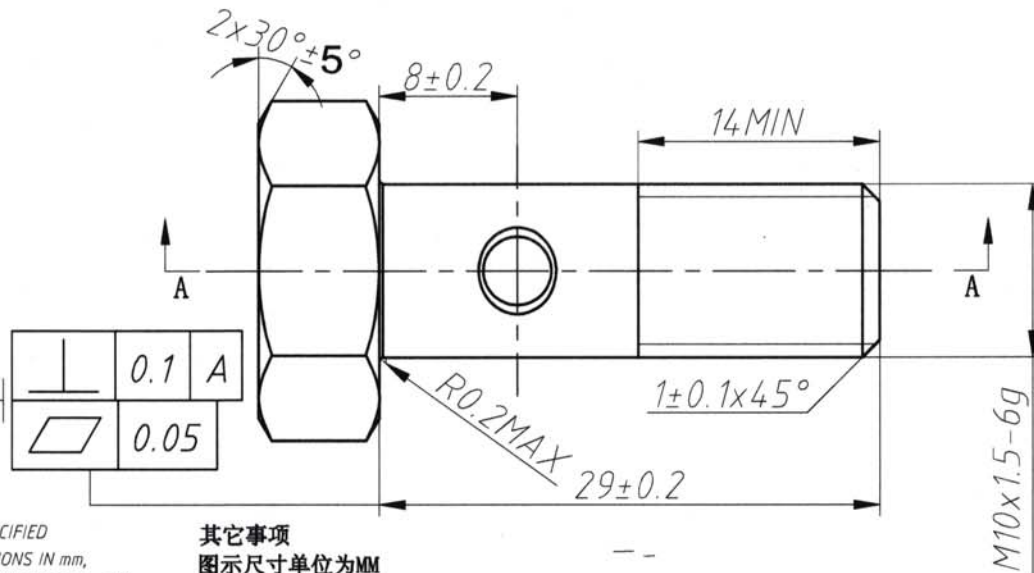
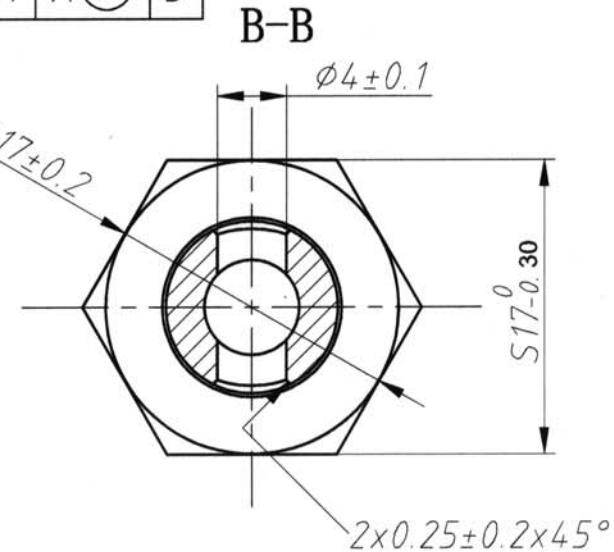


REV 更改号	DATE 日期	REVISION DETAILS 更改内容	APPD 审核并批准
A	Apr.30	Production Issue	
B	Feb.1,2019	Change the part's name from Zhang 41259-m10 to 41368-BB-M10	



⊕	∅0.4	A(M)	B
---	------	------	---



⊥	0.1	A
▭	0.05	

UNLESS SPECIFIED
ALL DIMENSIONS IN mm,
MACHINED SURFACES Ra=3.2um,
ANGLE TOLERANCES ±1°,
Other tolerance except angles,
in accordance with
GB/T1804-2000(ISO2768-1)-m and
GB/T1184-1996(ISO 2768-2)-m

其它事项
图示尺寸单位为MM
未注机加工表面粗糙度为Ra=3.2
未注角度公差±1°
其它未注公差（除角度外）均按：
GB/T1804-2000(ISO2768-1)-M和
GB/T1184-1996(ISO 2768-2)-m

PART NO			
零件名		41368-BB-M10	
SCALE NTS	APPD: Zhang	DRN	DATE
	批准: Zhang	制图: KEVIN	日期: 2018.04.26
	DATE	CHK 材质: 45#	DATE
	日期: 2018.02.19	审核: YB. ZHAN	日期: 2018.04.26

MATERIAL	Chinese steel 40Cr	材质: 40Cr
FINISH	Remove all sharp edges, burns, silvers and swarf, break all edges 0.127-0.254mm. zinc plating with 8um microns minimum plating thickness and trivalent chromate passivation and withstand 96 HRS to white/144 HS to red rust in salt spray test.	去除所有毛刺, 铁屑等残留物, 锐边倒钝0.127-0.254mm 镀锌, 三价铬钝化, 银白色, 盐雾试验96小时无白斑, 144小时无红锈, 镀锌层厚度大于8um